



# Speedscale Continuous Resiliency

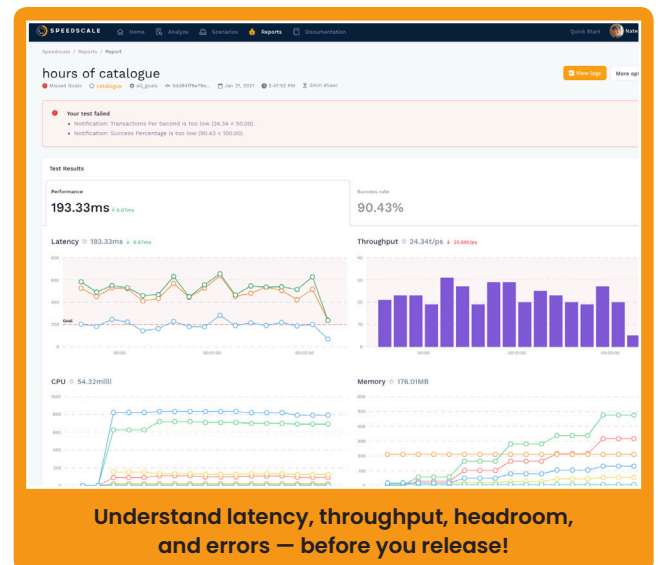


Speedscale Continuous Resiliency allows DevOps teams to capture the real-world traffic, integrations and data of any container or node in the application delivery pipeline, automating the replay of production scenarios in realistically simulated environments to forecast their success or failure prior to deployment.

## The Challenge

Cloud-native resiliency is hard to achieve. Agile releases in ephemeral cloud infrastructures with thousands of API interdependencies can quickly outstrip the scale of your test automation, and result in either immense toil to keep things running, or massive failures in front of customers.

- Even automated tests require manual test creation and 50-80% time spent on test maintenance and rework
- Conflicts over reliable pre-prod environments with dependencies and clean data in place are inevitable
- Monitoring and observability tools can tell you what happened, not what will happen
- Canary tests and progressive deployment are useful, but can create unintended consequences and firefighting in production

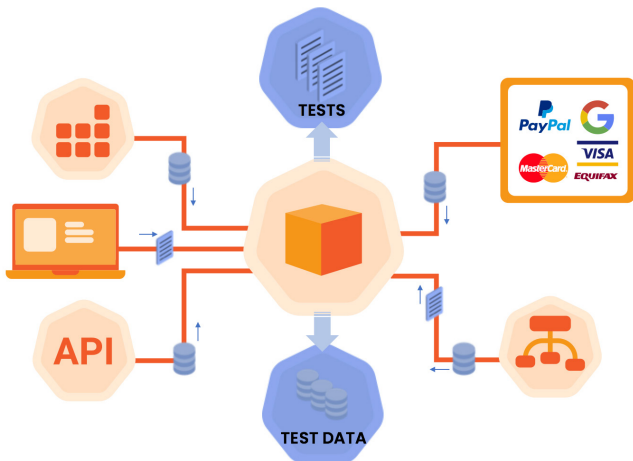


**Wouldn't it be cool if we could deliver cloud-native applications at web-scale speeds, and already know they would work as expected in deployment?**

## How Speedscale Works

Feed Speedscale traffic (or let us listen to your app) and we'll turn it into traffic snapshots and corresponding mock containers. Let our operator replay traffic against new code for a robust, automated forecast of success (or failure) before every deployment..

- Set up Speedscale listeners, then tell it what timespans of traffic you'd like to replay.
- Speedscale generates the traffic replay with appropriate data, auth and mocks.
- Connect Speedscale replays to your favorite CI/CD tools for automated execution, teardown and reporting.
- Sit back and enjoy regression and performance reports for every build.
- Speedscale automatically launches and decommissions workloads to save on pre-prod cloud costs.



Speedscale generates the traffic replay with appropriate data, auth and mocks.

## Get Started

Understand latency, throughput, headroom, and errors -- before you release! The best part? You don't have to write any scripts or talk to anyone! To learn more and request a demo, visit [www.speedscale.com](http://www.speedscale.com).

Try Continuous Resiliency today at <https://speedscale.com>

## Benefits & Features

Continuous Resiliency from Speedscale gives you the power of a virtual 'SRE-bot' working inside your automated software release pipeline. Forecast the real-world conditions of every build, and know you'll hit your SLOs before you go to production.

### DevOps / SRE Pros

Understand if your app will break or burn up your error budget before you release.



### Engineering Leads

Let Speedscale use traffic to autogenerate tests and mocks. Introduce Chaos testing and fuzzing.

### Application Executives

Understand regression/performance, increase uptime and velocity with automation.

### Automated Traffic Replay for Every Stakeholder!

